



# 奎笼 海鲜 餐厅

MENU



All the dishes contain MSG.  
Please inform our friendly server of any special requests without MSG.



奎笼拼盘

Kelong Combination

# 冷热前菜

## HOT & COLD PLATTER

### 豪华龙虾拼盘

Luxury Lobster Combination 

Lobster Salad, Deep Fried Tofu, and Vegetable Spring Roll

**1,210** small **1,870** large

### 奎笼拼盘

Kelong Combination

Thai Seafood Salad, Vegetable Spring Roll, Crab Stick Salad, and Deep Fried Tofu

**506** small **1,012** large

### 鲜果虾沙拉

Prawn Mayonnaise


**265** small **530** large

### 泰式海鲜沙拉

Thai Seafood Salad 

**310** small **615** large

 Chef Recommendation 厨师推介

 Contain Nuts 含有花生或坚果

 Spicy 辣味

All prices are subject to 10% Service Charge and 11% Government Tax and represented in thousand rupiah ('000'). All food items are subject to change according to seasonality and availability. Please inform our friendly server of any special dietary request, restrictions or allergies.

上述价格并收取10%的服务费和11%的现行政府税，以千印尼盾为单位('000')。

# 汤羹 SOUP

## 蟹肉玉米汤

Crab Meat and Sweet Corn Soup



### 滋补养生鸡汤

Chicken Double Herbal

187 small 286 medium 374 large

### 龙皇干贝带子羹

Braised Scallop Broth 

265 small 405 medium 530 large

### 蟹肉玉米汤

Crab Meat and Sweet Corn Soup

190 small 285 medium 375 large

### 四川海鲜汤

Szechuan Seafood Soup 

245 small 385 medium 485 large

### 竹笙海鲜汤

Bamboo Shoots Seafood Soup

245 small 385 medium 485 large

### 冬炎海鲜汤

Tom Yum Seafood Soup 

245 small 385 medium 485 large

 Chef Recommendation 厨师推介

 Contain Nuts 含有花生或坚果

 Spicy 辣味

All prices are subject to 10% Service Charge and 11% Government Tax and represented in thousand rupiah ('000'). All food items are subject to change according to seasonality and availability. Please inform our friendly server of any special dietary request, restrictions or allergies.

上述价格并收取10%的服务费和11%的现行政府税，以千印尼盾为单位('000')。

# 蟹 CRAB

## 黑胡椒螃蟹

Wok-fried Crab Tossed in Black Pepper



石蟹  
Stone Crab

105 / 100 g

花蟹  
Flower Crab

60 / 100 g

蒸或炸馒头  
Steamed or Fried Bun

21 / pc

奶皇螃蟹

Wok-fried with Butter and Egg Yolk 🌶️

辣椒螃蟹

Chilli Sauce 🌶️

黑胡椒螃蟹

Wok-fried Tossed in Black Pepper 🍳🌶️

炒姜葱螃蟹

Sautéed with Ginger and Spring Onion

咸蛋蜜汁式螃蟹

Salted Egg and Honey 🍳🌶️

👑 Chef Recommendation 厨师推介

🥜 Contain Nuts 含有花生或坚果

🌶️ Spicy 辣味

All prices are subject to 10% Service Charge and 11% Government Tax and represented in thousand rupiah ('000'). All food items are subject to change according to seasonality and availability. Please inform our friendly server of any special dietary request, restrictions or allergies.

上述价格并收取10%的服务费和11%的现行政府税，以千印尼盾为单位 ('000')。



糖醋式

Sweet and Sour

## 活魚 LIVE FISH

金目鲈

Sea Bass

85 / 100 g

黑鲷鱼

Black Snapper

90 / 100 g

黑石斑鱼

Black Garoupa

105 / 100 g

红石斑鱼

Red Garoupa

145 / 100 g

烹调方式 — Preparation

港式蒸

Steamed Hong Kong Style 🍷

潮州蒸

Steamed Teochew Style

娘惹蒸

Steamed Nyonya Style 🍷🌶️

糖醋式

Sweet and Sour

油浸豉油皇汁

Deep Fried in Superior Sauce

油浸奎龙特制辣椒

Deep Fried with Kelong Chilli 🌶️

🍷 Chef Recommendation 厨师推介

🥜 Contain Nuts 含有花生或坚果

🌶️ Spicy 辣味

All prices are subject to 10% Service Charge and 11% Government Tax and represented in thousand rupiah ('000'). All food items are subject to change according to seasonality and availability. Please inform our friendly server of any special dietary request, restrictions or allergies.

上述价格并收取10%的服务费和11%的现行政府税，以千印尼盾为单位 ('000')。

# 龙虾 LOBSTER



咸蛋蜜汁龙虾

Lobster in Salted Egg and Honey



龙虾  
Lobster

315 /100 g

蒜蓉蒸龙虾  
Steamed with Garlic

酥炸奶油龙虾  
Deep Fried with Butter  

香炒姜葱式龙虾  
Ginger and Scallion

咸蛋蜜汁龙虾  
Salted Egg and Honey  

特制辣椒炒龙虾  
Kelong Chilli Sauce 

 Chef Recommendation 厨师推介

 Contain Nuts 含有花生或坚果

 Spicy 辣味

All prices are subject to 10% Service Charge and 11% Government Tax and represented in thousand rupiah ('000'). All food items are subject to change according to seasonality and availability. Please inform our friendly server of any special dietary request, restrictions or allergies.

上述价格并收取10%的服务费和11%的现行政府税，以千印尼盾为单位 ('000')。

# 虾 PRAWN



酥炸奶油鲜虾

Tossed in Butter 

咸蛋蜜汁鲜虾

Salted Egg and Honey 

糖醋汁鲜虾

Sweet and Sour

黑胡椒鲜虾

Black Pepper 

娘惹式鲜虾

Nyonya Style  

蒜蓉蒸鲜虾

Steamed with Garlic

245 small 360 medium 485 large

泰式鲜蝦冬粉煲

Thai Prawns with Glass Vermicelli 

370

# 鲜鱿 SQUID



香炒至尊XO酱鲜鱿

Wok-fried in XO Sauce 

咸蛋蜜汁鲜鱿

Salted Egg and Honey 

椒盐鲜鱿

Salt and Pepper 

酥炸鲜鱿

Crispy Fried Calamari

210 small 315 medium 420 large

 Chef Recommendation 厨师推介

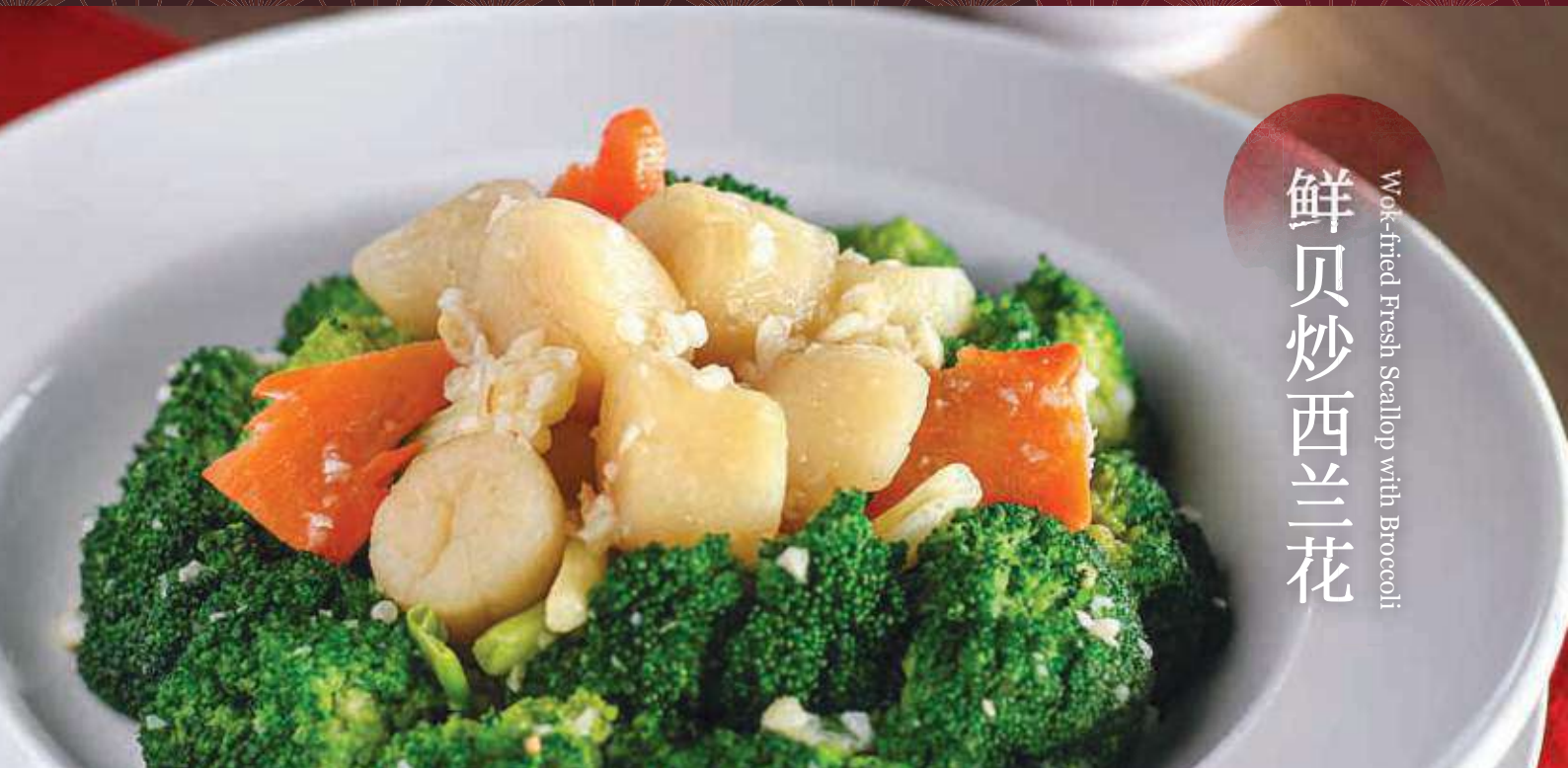
 Contain Nuts 含有花生或坚果

 Spicy 辣味

All prices are subject to 10% Service Charge and 11% Government Tax and represented in thousand rupiah ('000'). All food items are subject to change according to seasonality and availability. Please inform our friendly server of any special dietary request, restrictions or allergies.

上述价格并收取10%的服务费和11%的现行政府税，以千印尼盾为单位('000')。

# 鲜贝 FRESH SCALLOP



鲜贝炒西兰花

Wok-fried Fresh Scallop with Broccoli

## 蒸鲜贝

### Steamed Fresh Scallop On The Shell

蒜蓉蒸鲜贝

With Garlic

220 small 330 medium 440 large

## 干炒鲜贝

### Wok-fried Fresh Scallop

鲜贝炒西兰花

With Broccoli

365 small 545 medium 730 large

鲜贝炒XO酱

In XO Sauce 🌶️

## 白酌贡贡(当地海螺)

### Gong-Gong (Sea Snail)

195 small 295 medium 395 large

 Chef Recommendation 厨师推介

 Contain Nuts 含有花生或坚果

 Spicy 辣味

All prices are subject to 10% Service Charge and 11% Government Tax and represented in thousand rupiah ('000'). All food items are subject to change according to seasonality and availability. Please inform our friendly server of any special dietary request, restrictions or allergies.

上述价格并收取10%的服务费和11%的现行政府税，以千印尼盾为单位('000')。



# 鸡肉 CHICKEN

奎龙脆皮炸子鸡  
Kelong Crispy Chicken

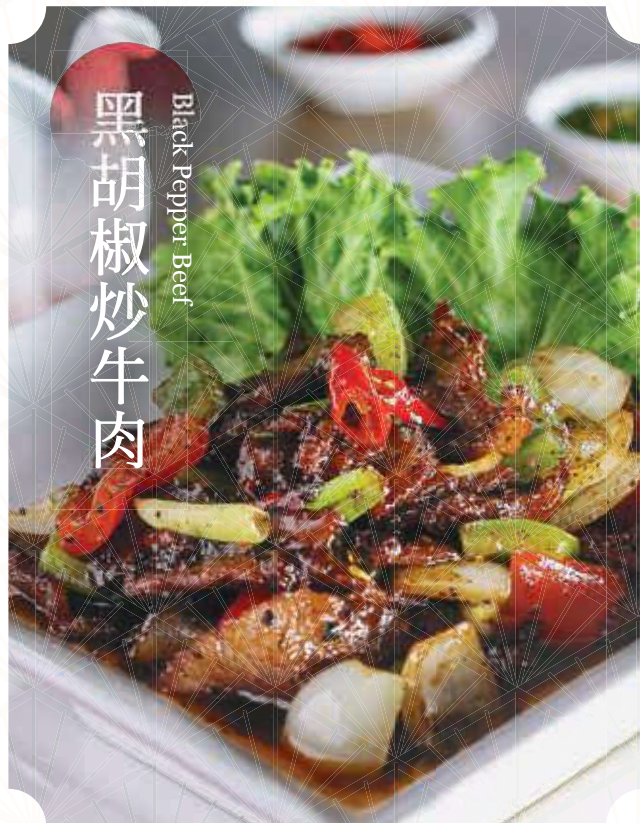
165 half 330 whole

甜酸鸡宝篮  
Sweet and Sour Chicken Treasure Basket

柠檬鸡  
Chicken with Lemon Sauce

宫保鸡丁  
Gong Bao Chicken 🥜🌶️

155 small 225 medium 310 large



# 牛肉 BEEF

牛肉西兰花  
With Broccoli

黑胡椒炒牛肉  
Black Pepper 🌶️

姜葱炒牛肉  
Ginger and Scallion

195 small 305 medium 395 large

👨‍🍳 Chef Recommendation 厨师推介

🥜 Contain Nuts 含有花生或坚果

🌶️ Spicy 辣味

All prices are subject to 10% Service Charge and 11% Government Tax and represented in thousand rupiah ('000'). All food items are subject to change according to seasonality and availability. Please inform our friendly server of any special dietary request, restrictions or allergies.

上述价格并收取10%的服务费和11%的现行政府税，以千印尼盾为单位('000')。

# 豆腐和蛋 BEAN CURD & EGGS



豆腐蟹肉酱  
Bean Curd in Crab Meat Sauce

## 海鲜焖豆腐 Seafood Bean Curd

175 small 255 medium 355 large

## 豆腐蟹肉酱 Bean Curd in Crab Meat Sauce

265

## 海鲜煎蛋 Seafood Omelette

155 small 220 medium 310 large

## 蒸蛋 Steamed Egg

110 small 165 medium

 Chef Recommendation 厨师推介

 Contain Nuts 含有花生或坚果

 Spicy 辣味

All prices are subject to 10% Service Charge and 11% Government Tax and represented in thousand rupiah ('000'). All food items are subject to change according to seasonality and availability. Please inform our friendly server of any special dietary request, restrictions or allergies.

上述价格并收取10%的服务费和11%的现行政府税，以千印尼盾为单位('000')。

芥兰  
Kailan



## 蔬菜 VEGETABLES

空心菜  
Kang Kong

小白菜  
Siew Bok Choy

135 small 195 medium 265 large

芥兰  
Kailan

145 small 215 medium 285 large

西兰花焖菇  
Broccoli with Braised Mushrooms

165 small 235 medium 330 large

咸鱼炒茄子  
Eggplant and Salted Fish

110 small 165 medium 220 large

烹调方式：蒜蓉/叁峇辣椒 🌶️ / 蚝油

Preparation : Garlic / Sambal 🌶️ / Oyster Sauce

 Chef Recommendation 厨师推介

 Contain Nuts 含有花生或坚果

 Spicy 辣味

All prices are subject to 10% Service Charge and 11% Government Tax and represented in thousand rupiah ('000'). All food items are subject to change according to seasonality and availability. Please inform our friendly server of any special dietary request, restrictions or allergies.

上述价格并收取10%的服务费和11%的现行政府税，以千印尼盾为单位 ('000')。

马来炒面

Malay Fried Noodles 

干炒香港面

Stir-fried Hong Kong Noodles

海鲜面汤

Seafood Noodles Soup

米粉汤

Bee Hoon Soup

星洲炒米粉

Singapore Bee Hoon

海鲜焖冬粉

Seafood Glass Noodles

**155** small **230** medium **310** large

泰式海鲜炒饭

Thai Seafood Fried Rice

咸鱼鸡肉炒饭

Salted Fish and Chicken Fried Rice

黄梨海鲜炒饭

Pineapple Seafood Fried Rice

**180** small **255** medium **360** large

XO 炒饭

Fried Rice in XO Sauce 

**190** small **280** medium **380** large

白米饭

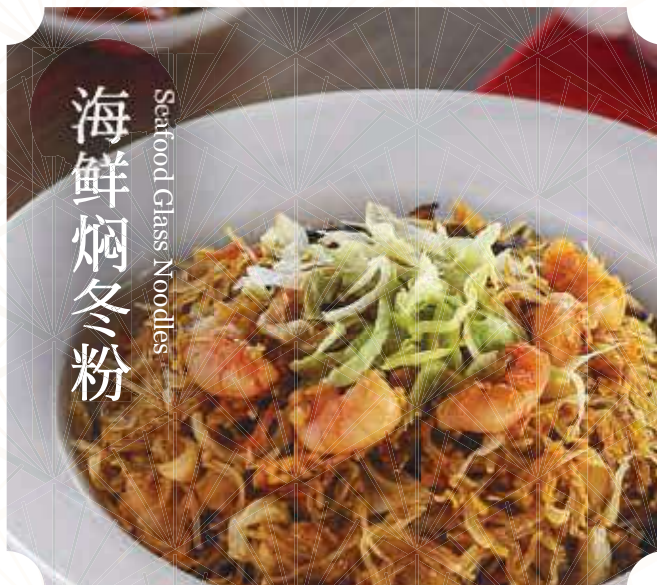
Steamed Rice

**30** / portion

## 面 NOODLES

海鲜焖冬粉

Seafood Glass Noodles




## 饭 RICE

黄梨海鲜炒饭

Pineapple Seafood Fried Rice



 Chef Recommendation 厨师推介

 Contain Nuts 含有花生或坚果

 Spicy 辣味

All prices are subject to 10% Service Charge and 11% Government Tax and represented in thousand rupiah ('000'). All food items are subject to change according to seasonality and availability. Please inform our friendly server of any special dietary request, restrictions or allergies.

上述价格并收取10%的服务费和11%的现行政府税，以千印尼盾为单位('000')。

# 素食 VEGETARIAN



炸素春卷  
Vegetable Spring Rolls

## 炸素春卷

Vegetable Spring Rolls

110 small 165 medium 220 large

## 玉米汤

Vegetarian Sweet Corn Soup

## 竹笙蔬菜汤

Vegetarian Bamboo Soup

## 素炒杂菜


Stir-fried Mixed Vegetables

125 small 175 medium 245 large

## 酸甜素鸡丁

Sweet and Sour Mock Chicken

## 黑胡椒素羊柳

Mock Lamb with Pepper 

## 素炒米粉

Vegetarian Fried Bee Hoon

## 素炒饭

Vegetarian Fried Rice

145 small 210 medium 290 large

 Chef Recommendation 厨师推介

 Contain Nuts 含有花生或坚果

 Spicy 辣味

All prices are subject to 10% Service Charge and 11% Government Tax and represented in thousand rupiah ('000'). All food items are subject to change according to seasonality and availability. Please inform our friendly server of any special dietary request, restrictions or allergies.

上述价格并收取10%的服务费和11%的现行政府税，以千印尼盾为单位 ('000')。

## 甜点 DESSERT

炸香蕉

Deep Fried Banana

125 small 175 medium 220 large

鲜果拼盘

Fresh Fruit Platter

135 small 195 medium 265 large

蜜瓜西米露

Honeydew Sago

60 / portion

椰子果冻

Coconut Jelly

60 / portion

海椰子

Sea Coconut

75 / portion

冰淇淋

Ice Cream

香草

Vanilla

50 / scoop

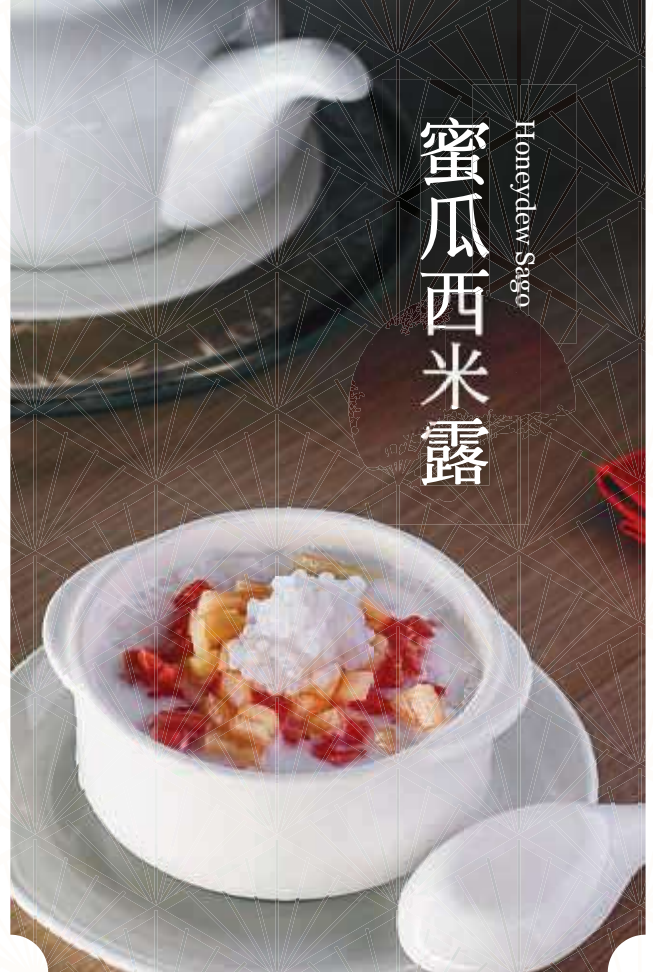
巧克力

Chocolate

50 / scoop

蜜瓜西米露

Honeydew Sago



## 儿童餐点

KIDS MENU

三拼组合 (炒饭, 香肠, 水煮蛋)

Three Item Combo  
(Fried Rice, Sausage, Boiled Egg)

110

芝士鸡块和薯条

Cheese Chicken Nugget with Fries

110

豆签鸡肉面

Soya Noodle Chicken

110

 Chef Recommendation 厨师推介

 Contain Nuts 含有花生或坚果

 Spicy 辣味

All prices are subject to 10% Service Charge and 11% Government Tax and represented in thousand rupiah ('000'). All food items are subject to change according to seasonality and availability. Please inform our friendly server of any special dietary request, restrictions or allergies.

上述价格并收取10%的服务费和11%的现行政府税, 以千印尼盾为单位 ('000')。

